

the Osprey



1738sf

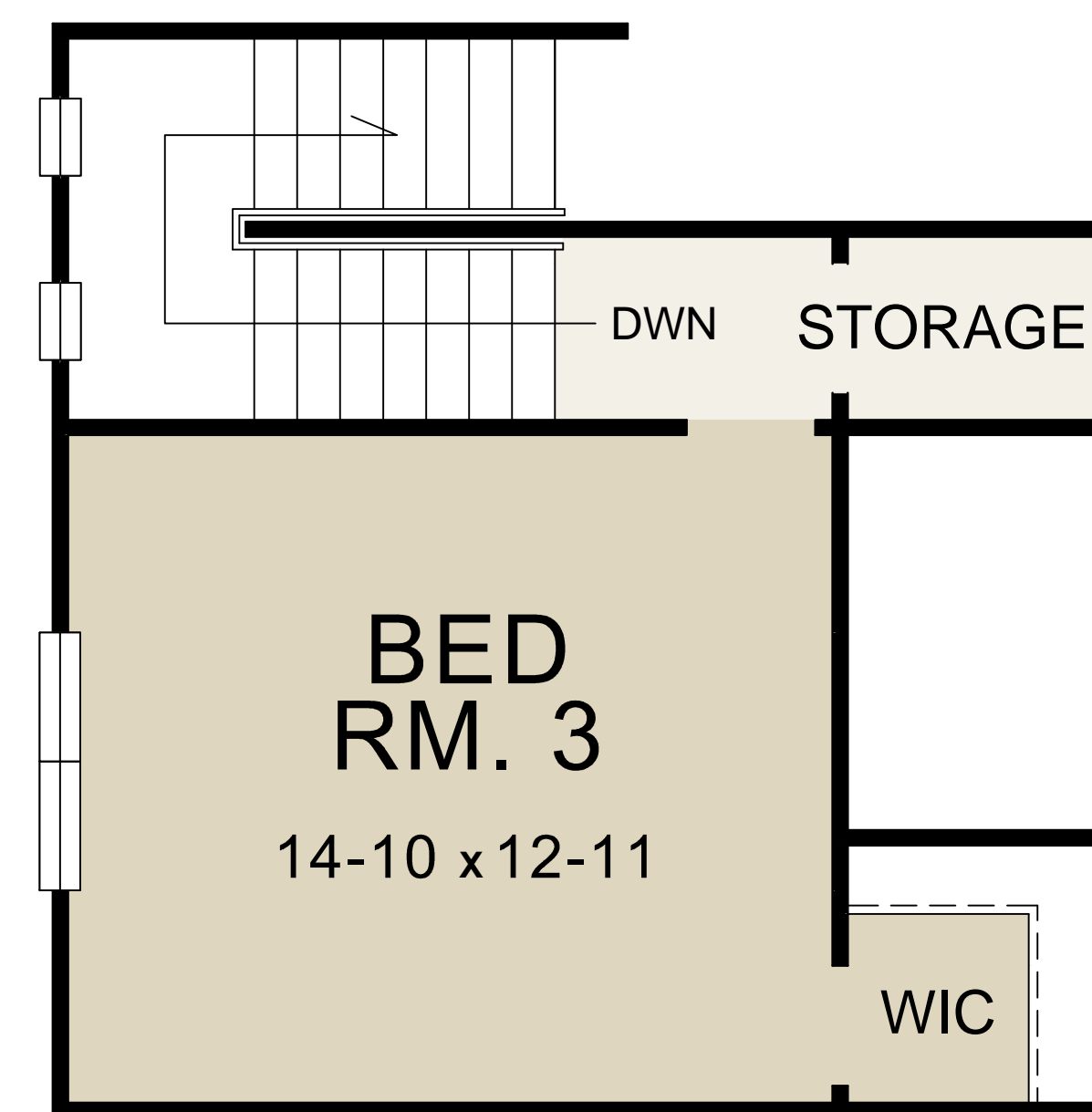
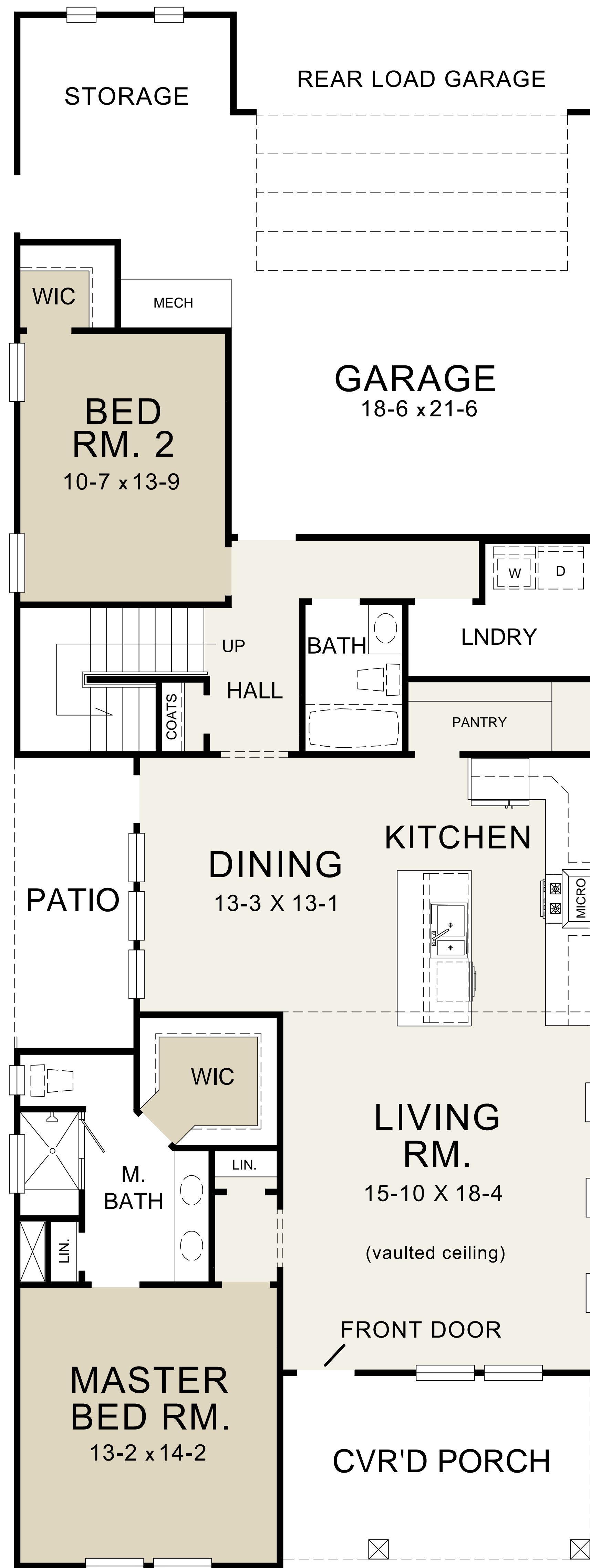


## Parkview Series

- 3 bedrooms
- 2 bathrooms
- 2 car garage with extra storage or shop space
- optional 4th bedroom can be added to 2nd floor

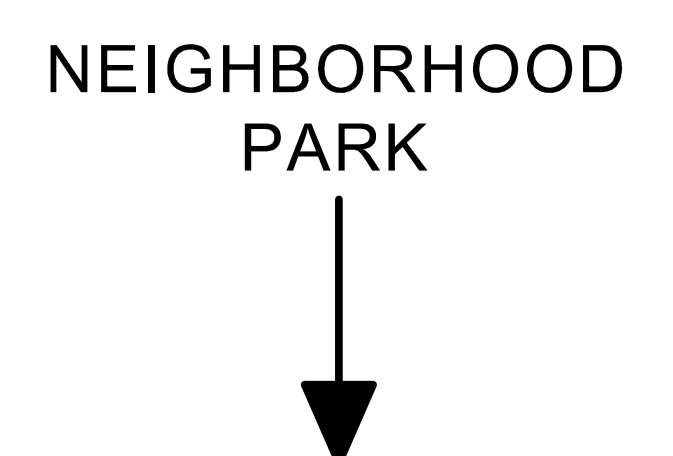
Large private side yard and covered patio for outdoor entertaining.

### MAIN FLOOR



### 2ND FLOOR

Homes overlook the private neighborhood park and provide a safe, easy access to the park and walking trails throughout the community.



970-256-7355

CopperCreekLife.com

