

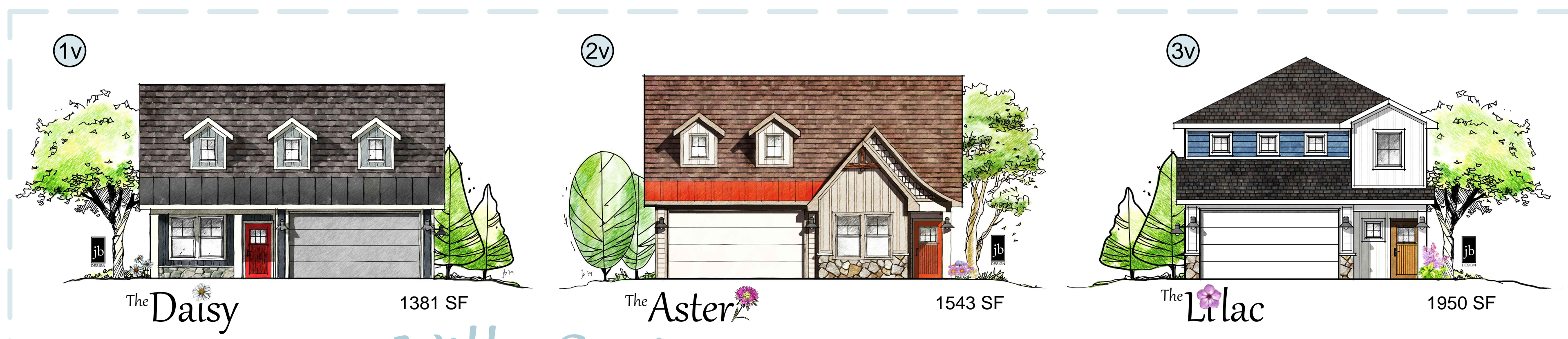
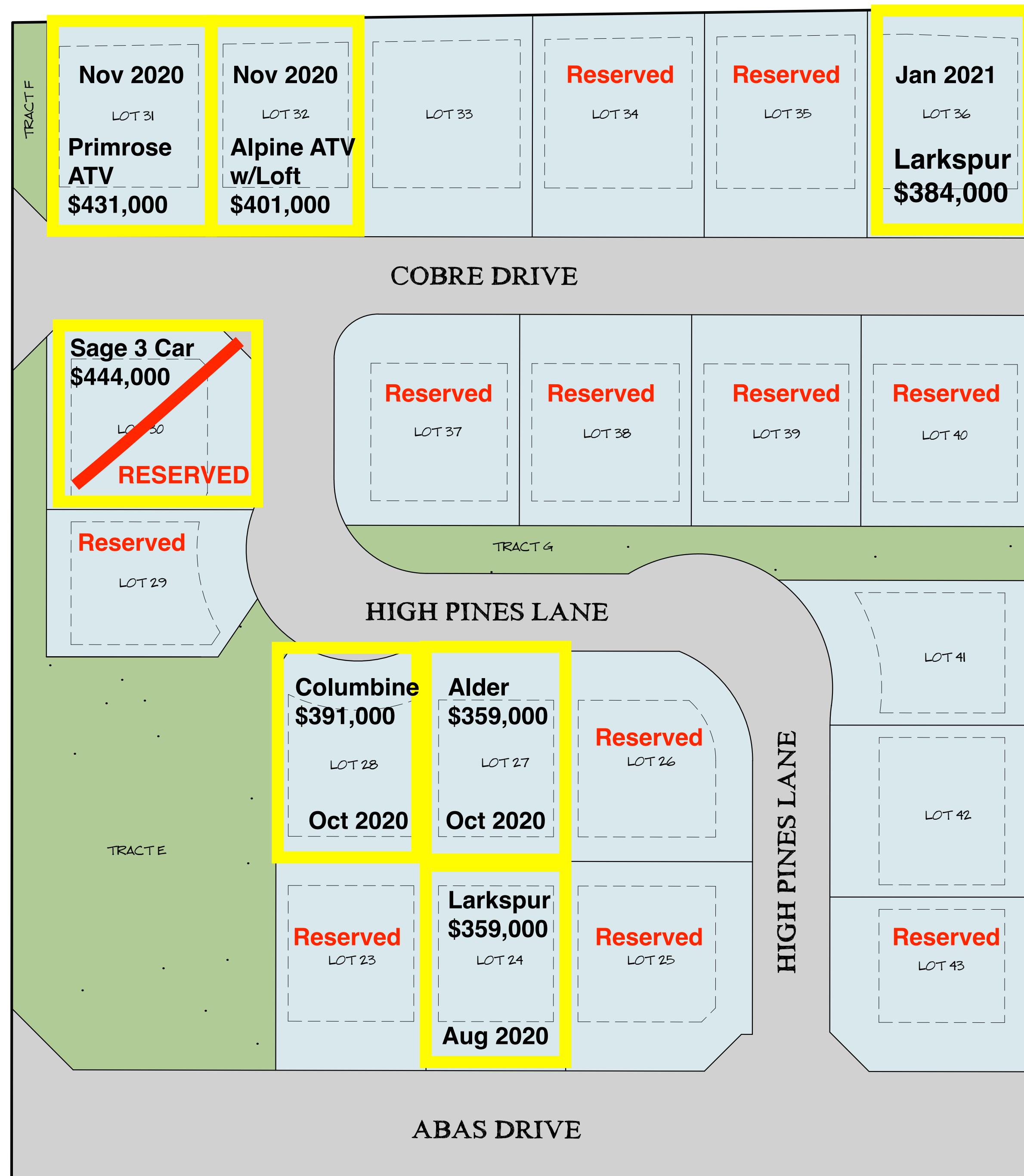
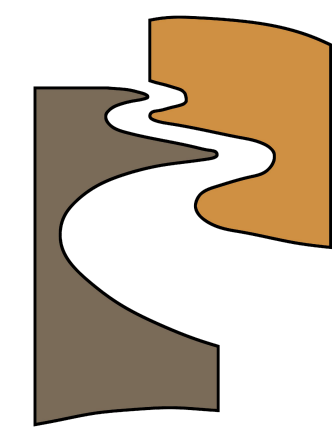
**Legend**

Yellow Highlight and Border: Available move-in-ready homes

The date highlighted is the tentative completion date

Pricing is subject to change

# Copper Creek BUILDERS



## Villa Series

Note: All information is subject to change without notice and must be confirmed by the design team prior to final contract and pricing.



**LEGEND**

PLAN NAME	PLAN #
Columbine	1
*3 car	1x
*Atv	1y
Larkspur	2
*3 Car	2x
*Atv	2y
Sage	3
Primrose	4
*3 car	4x
* Atv	4y
Dahlia	5
*3 car	5x
* Atv	5y
Alpine	6
*3 car	6x
* Atv	6y
Magnolia	7
Alder	8

LOT #	PLAN #
23	1,2,3,3v,4,4v,5,6,6y,8
24	2,3,3v,4v,5,8
25	1,1y,2,2y,3,3v,4,4v,4y,5,5y,6,6x,6y,8
26	1,2,3,3v,4,4v,5,5y,6,6y,8
27	2,3,3v,4v,5,8
28	1,2,3,4,5,6,6y,8
29	2,3,5,6,8
30	1,1y,2,2y,3,3v,4,4v,4y,5,5y,6,6x,6y,7,8
31	1,1y,2,2x,2y,3,3v,4,4v,4y,5,5x,5y,6,6x,6y,7,8
32	1,2,3,3v,4,4v,5,6,6y,8
33	All Vanguard & 3v,4v
34	All Vanguard & All Villa
35	1,1v,1y,2,2v,2y,3,3v,4,4v,4y,5,5y,6,6x,6y,7,8
36	1,1v,1y,2,2v,2y,3,3v,4,4v,4y,5,5y,6,6x,6y,7,8
37	1,1y,2,2y,3,3v,4,4v,4y,5,5y,6,6x,6y,7,8
38	All Vanguard & 3v,4v
39	1,1y,2,2x,2y,3,3v,4,4v,4y,5,5x,5y,6,6x,6y,7,8
40	1,1y,2,2x,2y,3,3v,4,4v,4y,5,5x,5y,6,6x,6y,7,8
41	3,5,6,8
42	1,1x,1y,2,2x,2y,3,4,4x,4y,5,5x,5y,6,6x,6y,8
43	2,3,5,8

PLAN #	LOT #
1	23,25,26,28,30,31,32,33,34,35,36,37,38,39,40,42
2	23,24,25,26,27,28,29,30,31,32,33,34,35,36,37,38,39,40,42,43
3	All Lots
4	23,25,26,28,30,31,32,33,34,35,36,37,38,39,40,42
5	All Lots
6	23,25,26,28,29,30,31,32,33,34,35,36,37,38,39,40,41,42
7	30,31,33,34,35,36,37,38,39,40
8	All Lots

\*subject to arch review  
3 car = 6' - 8' garage door  
Atv = 4' garage door

# Copper Creek North 11 Subdivision Filing 2

## Vanguard Series

